



Keep Michigan Beautiful, Inc.

KEEP AMERICA BEAUTIFUL AFFILIATE



Spring 2023

THE STATEWIDE ORGANIZATION OF VOLUNTEER CITIZENS PROGRAMMED WITH ACTION TO KEEP MICHIGAN BEAUTIFUL

From the Desk of KMB President, Beverly Smith



Looking forward to 60 more years of advocating for the beauty of Michigan...

When Keep Michigan Beautiful, Inc. was established in 1962 by then Governor John B. Swainson as a permanent, non-profit, non-political, statewide civic and volunteer organization whose mission was to combat litter and promote beautification in the State of Michigan, little did he realize that 60 years later

this organization would still be in existence and fully operating today in 2023.

That statement could not be made without giving all the credit to the many volunteers throughout these 60 years that have dedicated their time, efforts and skills to continuing the mission of KMB and enhancing its longevity along the way.

KMB has come a long way from operating mainly in the Detroit metropolitan area to extending its advocacy across the entire state of Michigan. In 1965, Governor Romney declared KMB the official state organization on beautification. Since then, each Governor has served as KMB's honorary chairperson and has supported KMB programs through annual proclamations.

KMB's Board of Directors and members represent over 40 cities, townships and municipalities across the state. We are proud to have recognized over 3500 statewide beautification projects, environmental cleanups and historical site renovations through KMB's annual Award Ceremony held each year in October.

I am especially excited to have been elected as KMB's 34th President and pledge to do my best to continue KMB's mission, further its capacity to increase its membership, create funding opportunities and sustain and build on our existing relationships.

None of these goals are possible without the help of our dynamic Board of Directors who willingly serve without hesitation. We welcome our newly-elected members to the Board of Directors and I extend an open invitation to you to join KMB as a Board Director or supporter. I invite you to visit our website at keepmichiganbeautiful.org or reach out to me at 313-268-3523. We want you to be a part of our KMB family!

IT'S TIME TO CELEBRATE SPRING

Keep Michigan Beautiful, Inc. and the Beautification Council of Southeastern Michigan hosted its

Annual Celebrate Spring Luncheon and Kick-Off to Michigan Clean-Up Days on

Wednesday, April 12, 2023

The Gazebo Banquet Center. Warren, MI



Our speakers were Monique Becker and Elyse Wolf, Co-Founders of Mona Lisa Living. Mona Lisa Living is a socially responsible housing and hospitality company with development, management, and general contracting capabilities. In 2019, Monique and Elyse quit their jobs and co-founded Mona Lisa Living because they were obsessed with making a house a home on a budget. Mona Lisa Living is a Detroit-Based, Detroit-Resident and Women-Owned business whose mission is to create neighborhood masterpieces that improve home, health, community and wealth.



Our Keynote Speaker was Nancy Edwards. Nancy is the Recreation Programs and Grants Officer/Director of Keep Genesee County Beautiful (KGCB) for the Genesee County Parks and Recreation Commission. Nancy has worked for the Genesee County Parks and Recreation Commission since 2001. In her current role with KGCB, Nancy and her staff work with an army of volunteers who have decided that it is time to end littering, improve recycling, and beautify Flint!

The attendees enjoyed a buffet lunch, KMB's Paper Bag Raffle and Door Prizes.

Executive Director's Message



Joanne Welihan, Executive Director

Happy Spring everyone! On this March 21st in Cheboygan, I am looking out the window to see 2 ft of snow on the ground. However, the bird feeders are busy with new arrivals and most of the ice is off Lake Huron. Warm weather and budding trees are just around the corner.

Now is the time for all good gardeners to start thinking about their gardens. What to leave in, what to take out, and what to add. All part of a good garden. It's also time to begin planning for Keep Michigan Beautiful events.

- **April 12** – Celebrate Spring event to be held at the Gazebo Banquet Center in Warren for both KMB members and BCSEM members. A delicious lunch, speakers, and raffles to open the spring season.
- **May 10** – KMB Executive Committee meeting – via Zoom
- **June 14** – KMB Executive Committee meeting – via Zoom
- **July 13-14** – Board of Directors Summer Meeting
Tour of Michigan State University Botanical Gardens
Board meeting, lunch and speaker at the Graduate Hotel in East Lansing

- **September 13** – Executive Committee Meeting – Brighton
- **October 19** – KMB Board of Directors Meeting – Courtyard Marriott - Lansing
- **October 20** – KMB Conference & Awards Program – Courtyard Marriott - Lansing
- **November 8** – Executive Committee meeting – via Zoom

You will notice that the majority of the Executive Committee meetings are via Zoom. One thing we learned during the COVID days, is that our zoom meetings made it possible for the Executive Committee to meet rather than traveling around the state for in-person meetings – especially on winter days.

As Executive Director, this year I am focusing on increasing KMB membership. If you have friends or acquaintances that you think would enjoy belonging to KMB, either contact me for membership applications, or e-mail me their names and addresses and I would be happy to get that information to them. You can reach me at 231-818-3838 or jwtelihan@gmail.com.

Chippewa Valley High School New Bench

During the raffle at the 2022 KMB Awards Ceremony, Kevin Bai won the Poly Products bench. The



following Monday, he donated it to Chippewa Valley High School, where he is the Ecology Club advisor. On Thursday, he and an Ecology Club member assembled the bench while the other Eco Club members conducted a campus wide litter pick-up as part of their commitment to KMB as a Clean and Green School.

The bench was placed along the school's Swimming Pool wall, across from the Pool Courtyard Garden, whose construction had won KMB's President's Plaque in 2017. The placement serves a dual purpose. It provides seating for students waiting to be picked up from school and sporting events as well as giving the students the opportunity to enjoy the large garden with its splendid Red Maple tree. Throughout the following week, the bench was publicized in the school's daily announcements.

The CVHS community is absolutely delighted with this wonderful, useful addition to its campus. They thank



Poly Products and KMB (and a lot of luck) for having won it!

Activities and Projects - Submitted by: Don Graham, KMB Director, Allen Park



Example of Mini-Gardens place near Play Grounds in Allen Park



Anti-Liter diorama for collection of 'cigarette filters' in vehicle cup holders... placed in Allen Park City Hall Lobby;



Promoting Anti-Litter along Detroit River waterways next to Wyandotte Yacht Club and boat launch.



Store Fair Booth promoting Beautification and 'Keeping Allen Park Clean, Green & Beautiful

Michigan's Looming Threat: Spotted Lanternfly

Written by: Lisa Kyle

Spotted lanternfly (*Lycorma delicatula*) is an invasive plant hopper native to China that feeds on over 70 species of trees and plants. In August 2022, the first confirmed detection was confirmed in Oakland County, Michigan, most likely transported on infected nursery stock.

It feeds by sucking sap and a by-product is honeydew, a sticky substance excreted in copious amounts coating bark, leaves and the plants below. Sap-feeding directly weakens the insects' host plant; the effects of honeydew collecting on the ground and foliage below will discolor or even kill other plants in the area, particularly as unsightly sooty mold forms. Its preferred host is another invasive, the tree-of-heaven

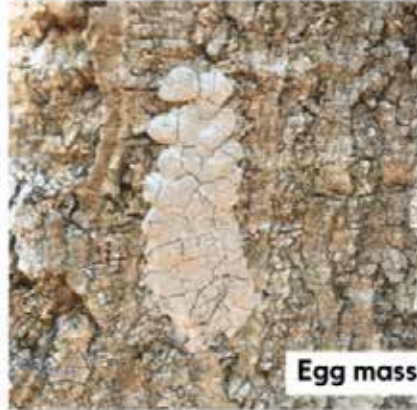
(*Ailanthus altissima*); it will feed on a myriad of other species as well including birch, willow, maple and even grapes - think vineyards.

While the adult and nymphs are quite distinctive in appearance, the egg masses are not, they can easily be mistaken as splashes of mud. In addition, the insects will lay eggs on almost anything, including vehicle tires which can easily transport eggs over long distances. The USDA, MDARD and the Michigan DNR are asking residents to vigilantly check for eggs and insects, and to report sightings immediately. For more information or to report a sighting visit Michigan.gov/SpottedLanternfly or aphis.usda.gov.



Adult

- About 1 inch long
- Folded wings are gray to brown with black spots
- Bright red hind wings



Egg mass

- Looks like chewing gum or putty or a waxy coating
- 1.5 inches



Immature

- ¼ to ½ inch long
- Wingless and beetle-like
- White spots

See it. Squash it. Report it.

Brix and Plant Health

Written by: James Keehn

What constitutes a healthy plant? What makes a healthy-looking plant suddenly become enticing to insects? And why certain insects and not others?

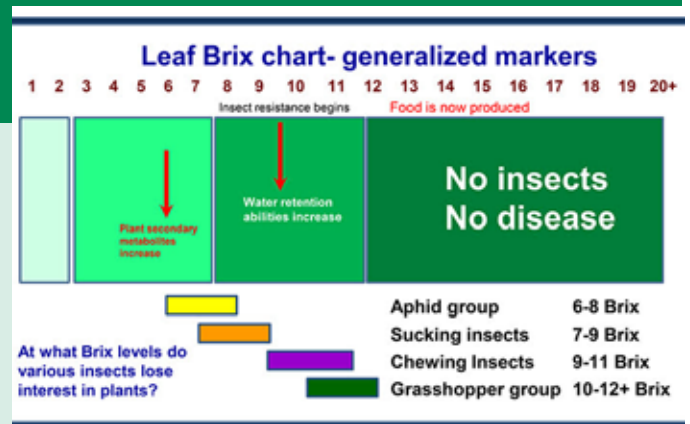
One indicator of plant life is found in a measurement of the sugar content of the leaf. You may have seen farmers checking the sugar content of fruit with a device they hold up to the sun. This tool is a refractometer. The sugar is measured in units known as degrees Brix. This is a measure of the dissolved solids in a liquid. Different concentrations of dissolved solids refract light differently and the refractometer measures this. The higher the degrees Brix, the more dissolved solids in the liquid. As many

scientific methods are, this one too was named after the scientist who discovered it, Adolph Brix. The value is grams of soluble solids per 100 grams of solution.

Brix levels can fluctuate with the weather. Plants can anticipate storms and move sugars into the roots to store as it may be needed for damage from the storm. Dehydrated plants will show a higher Brix level because the dissolved solids become more concentrated.

What I found interesting is that ranges of leaf Brix correspond to certain insect groups.

The way to improve the plant health is



to improve the soil. Fertilizing alone won't do it. As our bodies cannot use the food we eat without proper gut health, so it is with the soil. There is a lot that healthy soil can accomplish and it can be as simple as regularly adding composted organic matter into the soil.

Photo from "Understanding Brix and how it affects plants and pests", December 22, 2022, The Joe Gardener show.



Keep Michigan Beautiful, Inc.

KEEP AMERICA BEAUTIFUL AFFILIATE

P.O. Box 23215
Lansing, MI 48909

NON-PROFIT ORG.
U.S. POSTAGE
PAID
Ithaca, MI
Permit No. 35

2023 KMB Board of Directors

HONORARY CHAIR

Governor Gretchen Whitmer



www.keepmichiganbeautiful.org

KMB Newsletter Editor
Cheryl Anne Farmer
Email: keepmichiganbeautiful@gmail.com

EXECUTIVE COMMITTEE

Executive Director:

Joanne Welihan, Cheboygan

President:

Beverly Smith, Detroit

1st Vice President:

Timothy Jackson, Detroit

Secretary:

Nicole Lindsey, Detroit

Treasurer:

James Keehn, Harrison Twp.

Correspondence Secretary:

Renee Tokar, Gowen

Immediate Past President

Dan Welihan, Cheboygan

Members-at-Large:

Brian Colter, Grosse Pointe Park

Pat Deck, Grosse Pte. Park

Cheri King, Midland

Jerry Stone, Lathrup Village

William Strong, Williamsburg

Member Emeritus

Lincoln Avery, Novi

KMB DIRECTORS

Lois Adams, Taylor

Vania Apps, Fraser

Helen Bai, Grosse Pte. Shores

Alice Bailey, Ann Arbor

Becky Bottrell, Sault Ste. Marie

Ed Deeb, St. Clair Shores

Henry & Sandie Fischer, Grosse Pte.

Jack & Pam Frucci, Grosse Ile

Don Graham, Allen Park

Angela Ireland, Detroit

Kathleen Klein, Wixom

Noreen Kozlowski, Southfield

Lisa Kyle, Grosse Pointe Park

Teri Landis, Harbor Beach

Joey Lentine, Stockbridge

Angela Mabin, Marshall

Jeffery Muck, Novi

Hazel Rivers, Detroit

Frank & Carol Romano, Grosse Pte Woods

Celia Todd, Novi

Jeanette Woods, Honor

Communications Consultant:

Cheryl Anne Farmer

Accounting Consultant:

Annette Eustice, Cheboygan
CPA, Rehmann Group